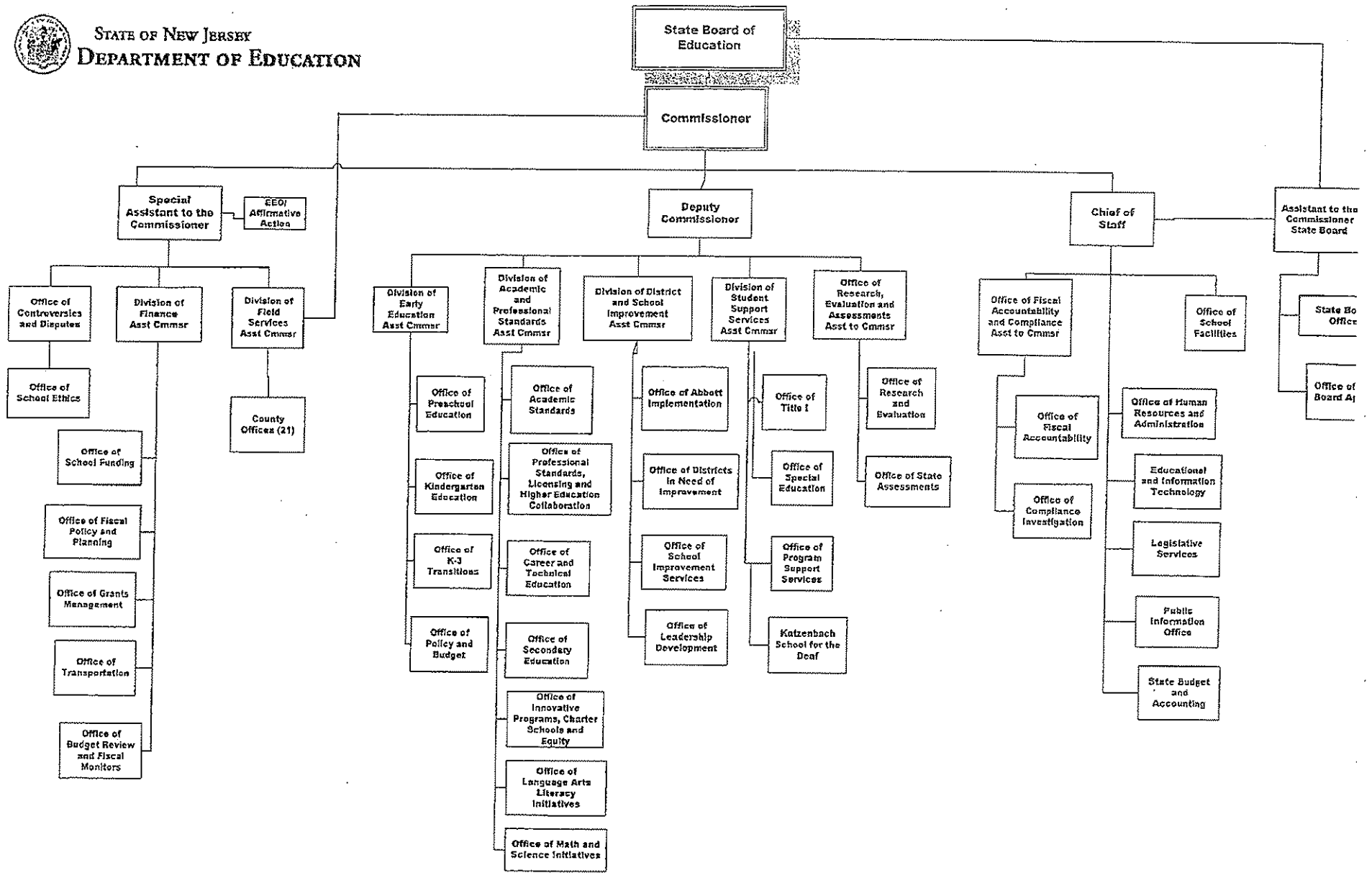




STATE OF NEW JERSEY
DEPARTMENT OF EDUCATION



6A:2-2.4 Reporting Responsibilities

- (a) The following senior managers report directly to the Commissioner:
1. The Deputy Commissioner. The following organizational units and their chief officers report directly to the Deputy Commissioner:
 - i. The Assistant Commissioner for the Division of Early Education. The following organizational units and their chief officers report directly to the Assistant Commissioner for the Division of Early Education:
 - (1) The Director of the Office of Preschool Education;
 - (2) The Director of the Office of Kindergarten Education;
 - (3) The Director of the Office of K-3 Transitions
 - (4) The Director of the Office of Policy and Budget;
 - ii. The Assistant Commissioner for the Division of Academic and Professional Standards. The following organizational units and their chief officers report directly to the Assistant Commissioner for the Division of Academic and Professional Standards:
 - (1) The Director of the Office of Academic Standards;
 - (2) The Director of the Office of Professional Standards, Licensing and Higher Education Collaboration;
 - (3) The Director of the Office of Career and Technical Education;
 - (4) The Director of the Office of Secondary Education;
 - (5) The Director of the Office of Innovative Programs, Charter Schools and Equity;
 - (6) The Director of the Office of Language Arts Literacy Initiatives
 - (7) The Director of the Office of Math and Science Initiatives;
 - iii. The Assistant Commissioner for the Division of District and School Improvement. The following organizational units and their chief officers report directly to the Assistant Commissioner for the Division of District and School Improvement:
 - (1) The Office of Abbott Implementation;
 - (2) The Office of Districts in Need of Improvement;
 - (3) The Office of School Improvement Services;
 - (4) The Office of Leadership Development;
 - iv. The Assistant Commissioner for the Division of Student Support Services. The following organizational units and their chief officers report directly to the Assistant Commissioner for the Division of Student Support Services:
 - (1) The Director of the Office of Title I;

- (2) The Director of Special Education;
 - (3) The Director of Program Support Services;
 - (4) The Director of the Katzenbach School for the Deaf;
 - v. The Assistant to the Commissioner for the Office of Research, Evaluation and Assessments. The following organizational units and their chief officers report directly to the Assistant to the Commissioner for the Office of Research, Evaluation and Assessments:
 - (1) The Director of the Office of Research and Evaluation;
 - (2) The Director of the Office of State Assessments.
2. The Special Assistant to the Commissioner. The following organizational units and their chief officers report directly to the Special Assistant to the Commissioner:
- i. The Assistant Commissioner for the Division of Finance. The following organizational units and their chief officers report directly to the Assistant Commissioner for the Division of Finance:
 - (1) The Director of the Office of School Funding;
 - (2) The Director of the Office of Fiscal Policy and Planning;
 - (3) The Director of the Grants Management Office;
 - (4) The Director of the Office of Transportation;
 - (5) The Director of the Office of Budget Review and Fiscal Monitors;
 - ii. The Assistant Commissioner for the Division of Field Services. The following organizational units and their chief officers report directly to the Assistant to the Commissioner for the Division of Field Services:
 - (1) The County Superintendents for each of the 21 counties in the State;
 - iii. The Director of the Office of Controversies and Disputes;
 - iv. The Director of the Office of School Ethics;
 - v. The Director of the Office of Equal Employment Opportunity and Affirmative Action
3. The Chief of Staff. The following organizational units and their chief officers report directly to the Chief of Staff:
- i. The Assistant to the Commissioner for the State Board Offices. The following organizational units and their chief officers report directly to the Assistant to the Commissioner for the State Board Offices:
 - (1) The Director of the State Board Office;
 - (2) The Director of the Office of State Board Appeals;

- ii. The Assistant to the Commissioner for the Office of Fiscal Accountability and Compliance. The following organizational units and their chief officers report directly to the Assistant to the Commissioner for the Office of Fiscal Accountability and Compliance:
 - (1) The Director of the Office of Fiscal Accountability;
 - (2) The Director of the Office of Compliance Investigation;
- iii. The Director of the Office of Human Resources and Administration;
- iv. The Director of the Office of Educational and Information Technology;
- v. The Director of Office of Legislative Services;
- vi. The Director of the Office of Public Information;
- vii. The Director of the Office of State Budget and Accounting; and
- viii. The Director of the Office of School Facilities.

March 7, 2007

APPOINTMENTS

<u>NOMINEE:</u>	<u>NOMINATED FOR POSITION OF:</u>	<u>REPORTS TO:</u>
Willa Spicer	Deputy Commissioner	Commissioner of Education
Jacqueline Jones	Assistant Commissioner for the Division of Early Education	Deputy Commissioner of Education
Penelope Lattimer	Assistant Commissioner for the Division of District and School Improvement	Deputy Commissioner of Education
Barbara Gantwerk	Assistant Commissioner for the Division of Student Support Services	Deputy Commissioner of Education
Jay Doolan	Assistant Commissioner for the Division of Academic and Professional Standards	Deputy Commissioner of Education
William King	Assistant Commissioner for the Division of Field Service	Special Assistant to the Commissioner